

## Automatic Garage Door Opener



### PRODUCT DESCRIPTION

- ★ THE MAGRO JCK SERIES GARAGE DOOR OPENER DESIGNED FOR RESIDENTIAL UP AND OVER GARAGE DOOR USE, UP TO 30 SQ.M.
- ★ EXQUISITE APPEARANCE, REMARKABLE PERFORMANCE AND EASY INSTALLATION.
- ★ DC24V MOTOR, THE AFFORDABLE SOLUTION FOR SECTIONAL GARAGE DOOR.
- ★ BUILT IN CONTROL UNIT WITH 433.92 MHZ RECEIVER.
- ★ BUILT IN LED COURTESY LIGHT.
- ★ SOFT START AND SLOW STOP FUNCTION.

## Automatic Rolling Door Opener



### PRODUCT DESCRIPTION

- ★ MAX UPGRADE WEIGHT: 1500KG
- ★ MAX UPGRADE HEIGHT: 9M
- ★ ROLLING DOOR OPENER ARE USING 220V AC POWER SUPPLY.
- ★ CAN BE MATCHED WITH MANUALLY LOCK BUTTON AND SECURITY LOCKING
- ★ SHELL: ALUMINUM ALLOY, SOLID AND LIGHT.
- ★ REMOTE CONTROL: OPTIONAL ROLLING CODE OR FIX CODE.
- ★ IT IS CONVENIENT TO MANUAL OPERATION WHEN POWER FAILED.
- ★ OPERATIONS ARE STABLE, LOW NOISE, SMALL VIBRATION

## Accessories



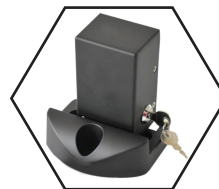
WIRELESS KEYPAD



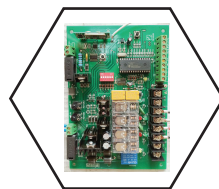
REMOTE CONTROL



FLASH LAMP



ELECTRIC LOCK



INTELLIGENT CONTROL BOARD



PHOTOCCELL



GSM SWITCH



STANDALONE RECEIVER



INFRARED EXIT SWITCH



GALVANIZED STEEL GEAR RACK

Authorised Dealer :

# SNAPSHOT IMAGES USED IN THIS CATALOGUE ARE FOR REFERENCE ONLY

# PRODUCT SPECIFICATIONS & APPEARANCE MAY BE CHANGED WITHOUT PRIOR NOTICE DUE TO IMPROVEMENTS

**AUTOGLIDE**  
INNOVATIONS UNLIMITED



www.autoglideglobal.com

## Automatic Swing Gate Opener



### Magro J - Series

MODEL	MAGRO-500 J	MAGRO-650 J
POWER SUPPLY	220V/50HZ; 110V/60HZ	
MOTOR POWER	70W	80W
GATE MOVING SPEED	18~22 SECOND PER 90 (APPROX.)	
MAX.SINGLE-LEAF WEIGHT	250 KG	325 KG
MAX.SINGLE-LEAF LENGTH	2.5 M	3.0 M
MAX.PISTON STROKE:	34 CM	54 CM
MAX.FORCE	1500 N	1500 N
REMOTE CONTROL DISTANCE	≥ 30M	≥ 30M
REMOTE CONTROL MODE	SINGLE / THREE BUTTON MODE	
STORAGE BATTERY (OPTIONAL)	DC24V (4.5AH OR 9.0AH)	
NOISE	≤58DB	≤58DB
WORKING DUTY	S2, 30MIN	S2, 30MIN
MAX. NO. OF REMOTE	25	25
FREQUENCY	433.92MHZ	433.92MHZ
WORKING TEMPERATURE	-20°C - +70 °C	-20°C - +70 °C
PACKAGE WEIGHT	17KG	19KG

## Automatic Sliding Gate Opener



### Casa J - Series

MODEL	CASA 60J	CASA 100J
POWER SUPPLY	220V/50HZ;100V/60HZ	
MOTOR POWER	280W	400W
GATE MOVING SPEED	11-13 M/MIN	11-13 M/MIN
MAX.WEIGHT OF GATE	600KG	1000KG
REMOTE CONTROL DISTANCE	≥ 30M	≥ 30M
REMOTE CONTROL MODE	SINGLE / THREE BUTTON MODE	
LIMIT SWITCH	SPRING / MAGNETIC LIMIT SWITCH	
NOISE	≤58DB	≤60DB
WORKING DUTY	S2, 15MIN	S2, 20MIN
MAX. NO. OF REMOTE	25	25
OUTPUT TORQUE	16 N.M	22 N.M
FREQUENCY	433.92 MHZ	433.92 MHZ
WORKING TEMPERATURE	-20°C - +70 °C	-20°C - +70 °C
PACKAGE WEIGHT	14.5KG	15KG

## Automatic Road Barrier



### Features:

- ★ A PROFESSIONAL ROAD BARRIER FOR LIGHT-MEDIUM TRAFFIC SITUATIONS.
- ★ CONSTRUCTED WITH AN ALUMINIUM ALLOY CHASSIS CAN BE MOUNTED EITHER LEFT OR RIGHT HAND SIDE OF ROAD.
- ★ ADVANCED MECHANICAL MOVEMENT AND WORM REDUCTION. GEAR MAKES THE RAISING ARM TO WORK STEADILY.
- ★ DUAL ELECTRONIC AND MECHANICAL LIMIT DESIGN AND ADJUSTABLE LIMIT SWITCH.
- ★ INPUT TERMINAL FOR PHOTOCCELL (OPTIONAL) AND AUTO REVERSE IN CASE OF OBSTACLE DURING BARRIER ARM UP OR DOWN.
- ★ FAST AND EASY MANUAL RELEASE.
- ★ EQUIPPED WITH EXTERNAL KEYPAD FOR USER TO OPERATE CONVENIENTLY.